



Estate Agents

For more properties in your area
Visit www.meestateagents.me



Guide £975,000 Freehold

Boyneswood Road, Medstead, Alton, GU34 5EA

	3		5		2		296
--	---	--	---	--	---	--	-----



Estate Agents

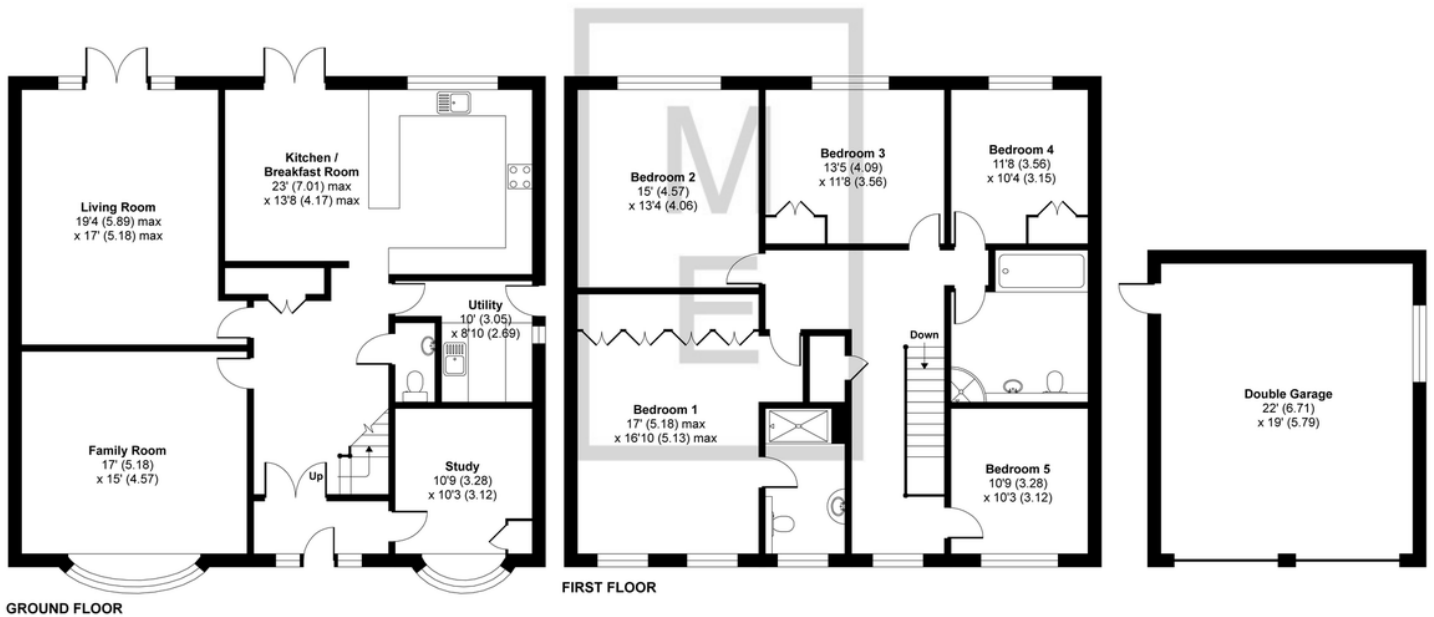
Boyneswood Road, Medstead, Alton, GU34

Approximate Area = 2767 sq ft / 257 sq m

Garage = 418 sq ft / 38.8 sq m

Total = 3185 sq ft / 295.8 sq m

For identification only - Not to scale



Floor plan produced in accordance with RICS Property Measurement Standards incorporating International Property Measurement Standards (IPMS2 Residential). © n/cheom 2021. Produced for ME Estate Agents. REF: 739468

Description

VIEW OUR VIRTUAL TOUR of this very impressive individual detached house in a highly regarded country area within a short walk of local amenities and Chawton Woods. With well fitted and presented accommodation of about 3185 sq ft including a double garage all in grounds of about 1/3 of an acre.

- 5 Bedrooms
- 2 Bathrooms
- 3 Good Reception Rooms
- 23' Kitchen Dining Room
- Utility Room
- Spacious Landing
- Large Hall
- Cloakroom
- Detached Double Garage
- About 1/3 Acre
- Oil CH and Private Drainage
- EPC Rating D