



Estate Agents

For more properties in your area  
Visit [www.meestateagents.me](http://www.meestateagents.me)



**£210,000** Leasehold

Park Prewett Road, Basingstoke, Hampshire

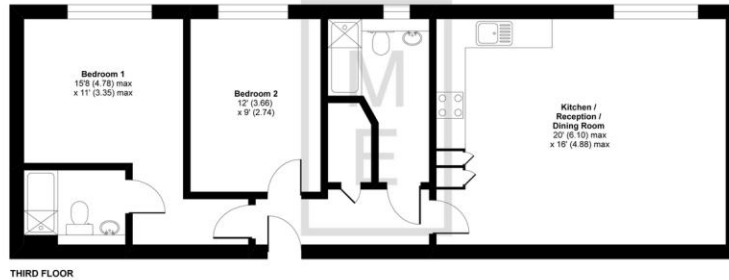
	<b>1</b>		<b>2</b>		<b>2</b>		<b>71</b>
--	----------	--	----------	--	----------	--	-----------



## Cherrydene House, 51A Park Prewett Road, Basingstoke, RG24

Approximate Area = 759 sq ft / 70.5 sq m

For identification only - Not to scale



THIRD FLOOR

Certified Property Measure Floor plan produced in accordance with RICS Property Measurement Standards incorporating International Property Measurement Standards (IPMS Residential). © RICScom 2023. Produced for ME Estate Agents. REF: 652623

## Description

A well presented first floor, two bedroom apartment with local amenities right on the doorstep.

- Two Double Bedrooms
- Open Plan Living Space
- Fully Integrated Kitchen
- En-suite Shower Room
- Allocated Off Road Parking

## More information

### - EPC Rating

B