



Estate Agents

For more properties in your area
Visit www.meestateagents.me



Offers in Excess of £425,000 Freehold

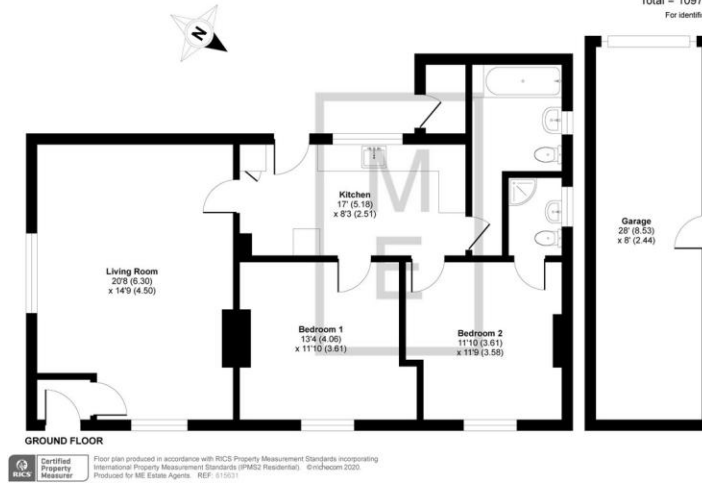
Ball And Wicket Lane, Upper Hale, Farnham,

	1		2		2		100
--	----------	--	----------	--	----------	--	------------



Ball And Wicket Lane, Farnham, GU9

Approximate Area = 1081 sq ft / 100 sq m (includes garage)
Store = 16 sq ft / 1 sq m
Total = 1097 sq ft / 101 sq m
For identification only - Not to scale



Description

A well-proportioned two-bedroom bungalow with garage and parking, and within close proximity to Hale Green. The property benefits from two double bedrooms, two bathrooms, kitchen and living dining room. Outside there is an enclosed garden with a garage and off-road parking for two vehicles.

- Two double bedrooms
- En-suite to master bedroom
- Living dining room
- Enclosed garden
- Garage and driveway parking

More information

- EPC Rating

E